



Trade Lane Focus:

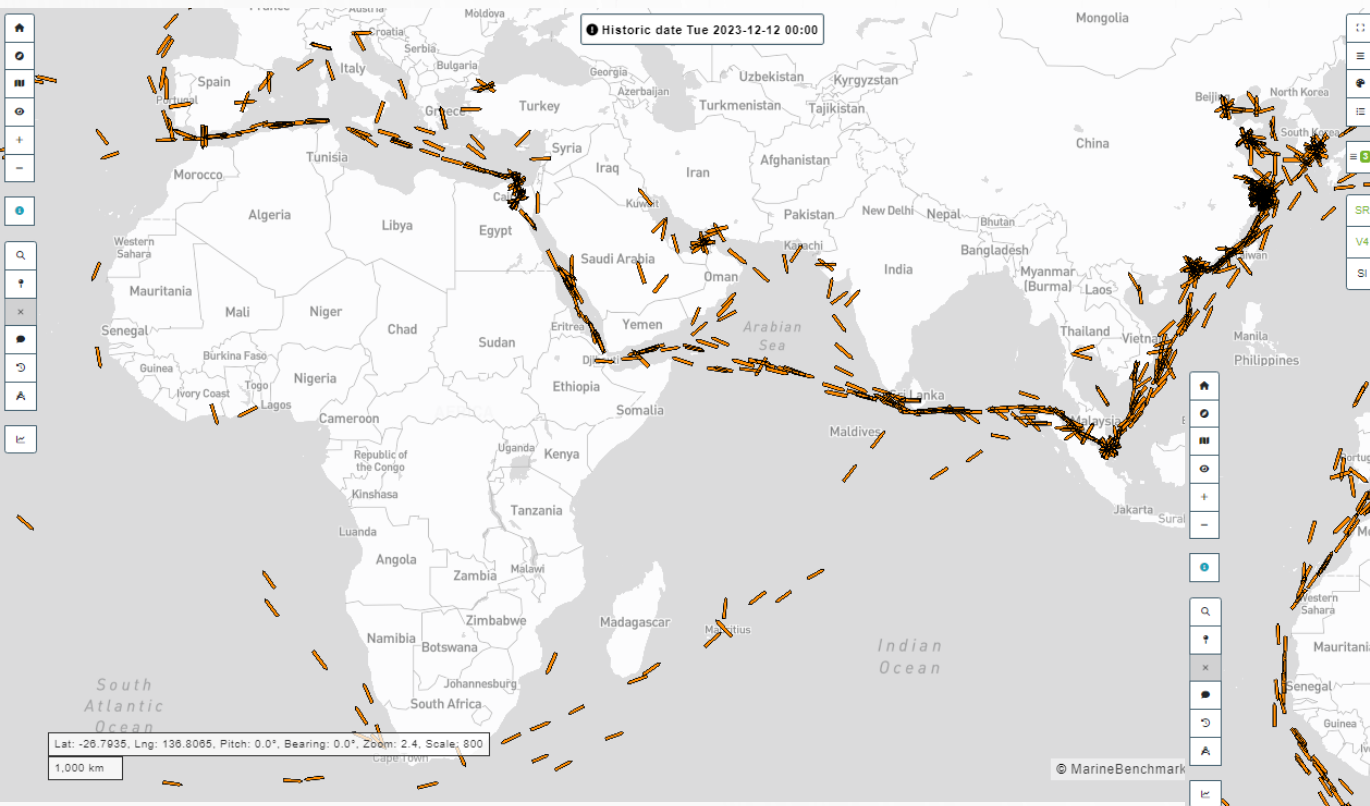
Asia – Europe, an Eternal Transition to Normalization?

5 March 2024

Chief Analyst Peter Sand

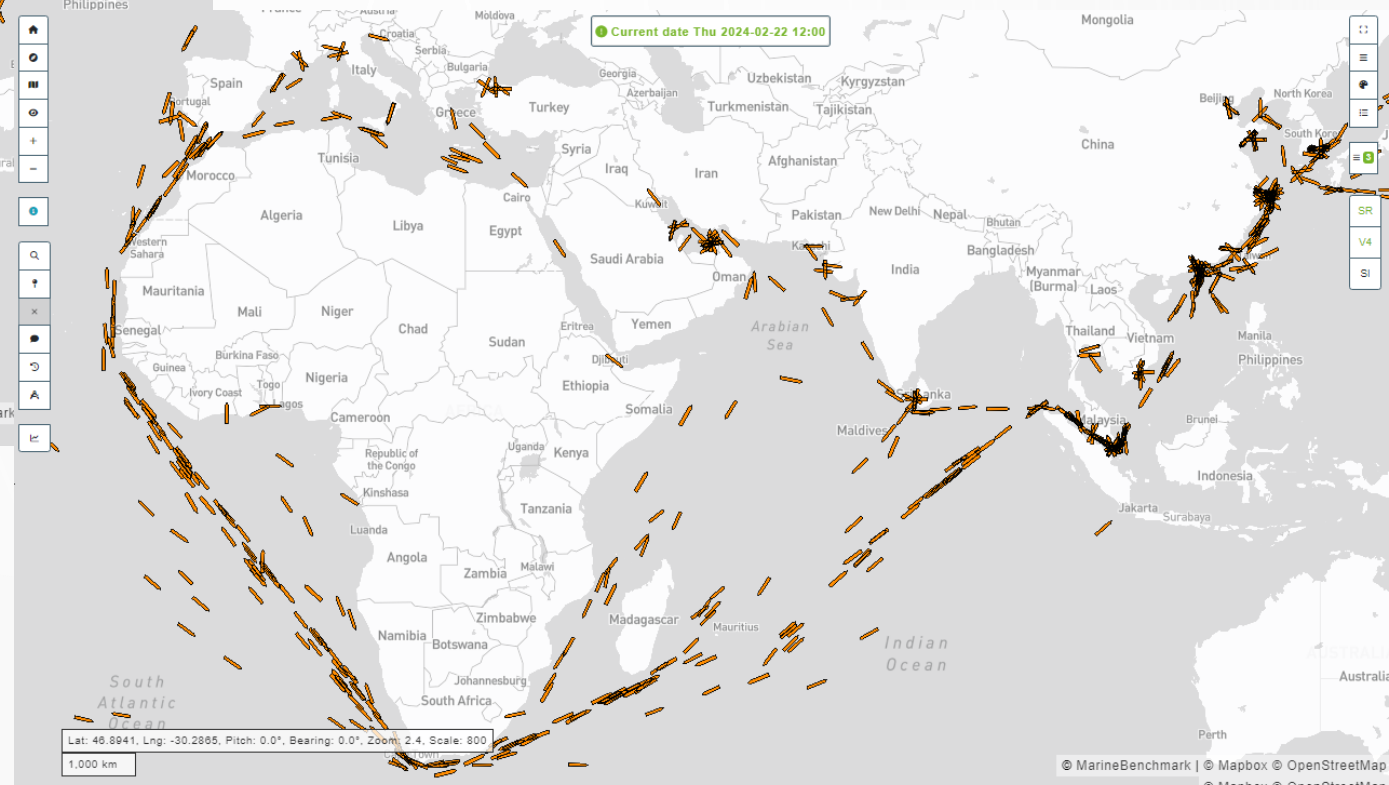
Services re-routed to avoid Houthi attacks in Red Sea

Largest supply chain disruption since COVID



Ships sailing round CoGH on 12 Dec '23 (LH) are mostly heading for LatAm

On 22 Feb '24, the lion's share of carriers are rerouting – image below

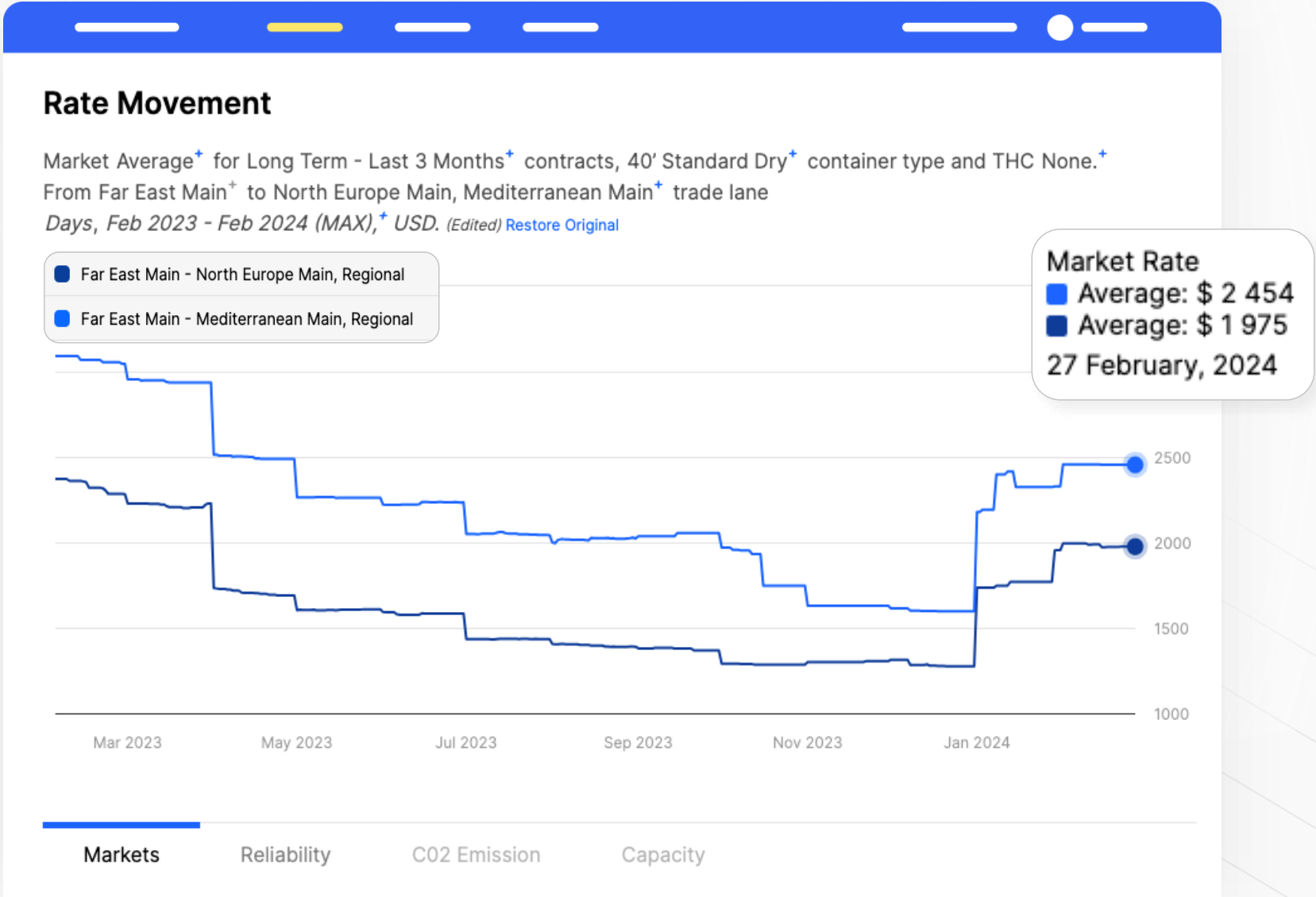


XENETA MARINE BENCHMARK

Filter: +10,000 TEU container ships for any destination

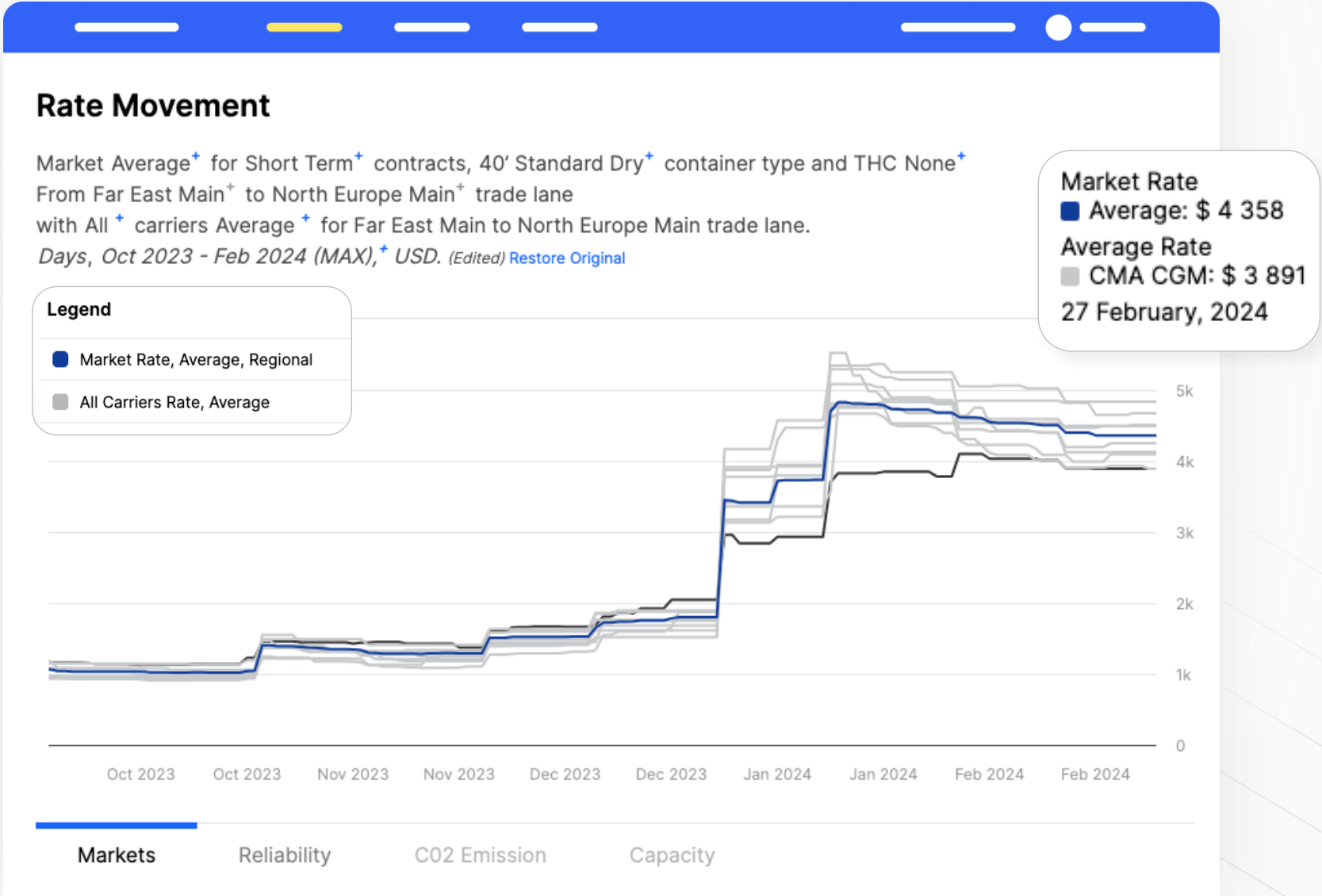
Xeneta Ocean Monitor 2.0

LONG-term contracts signed within the last three months



Xeneta Ocean Monitor 2.0

LONG-term contracts signed within the last three months

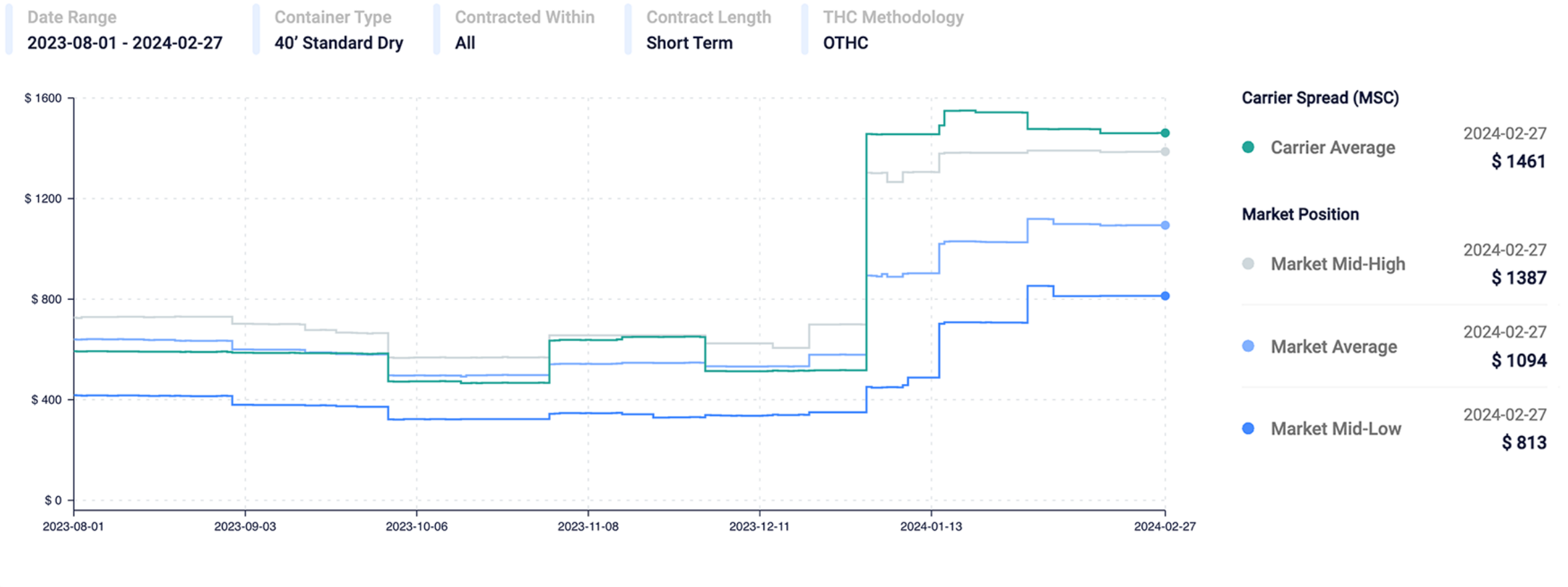


Uncertainty makes the spread widen – also on the backhaul

This carrier is following market average on fronthaul, while pricing differently on the backhaul in 2024

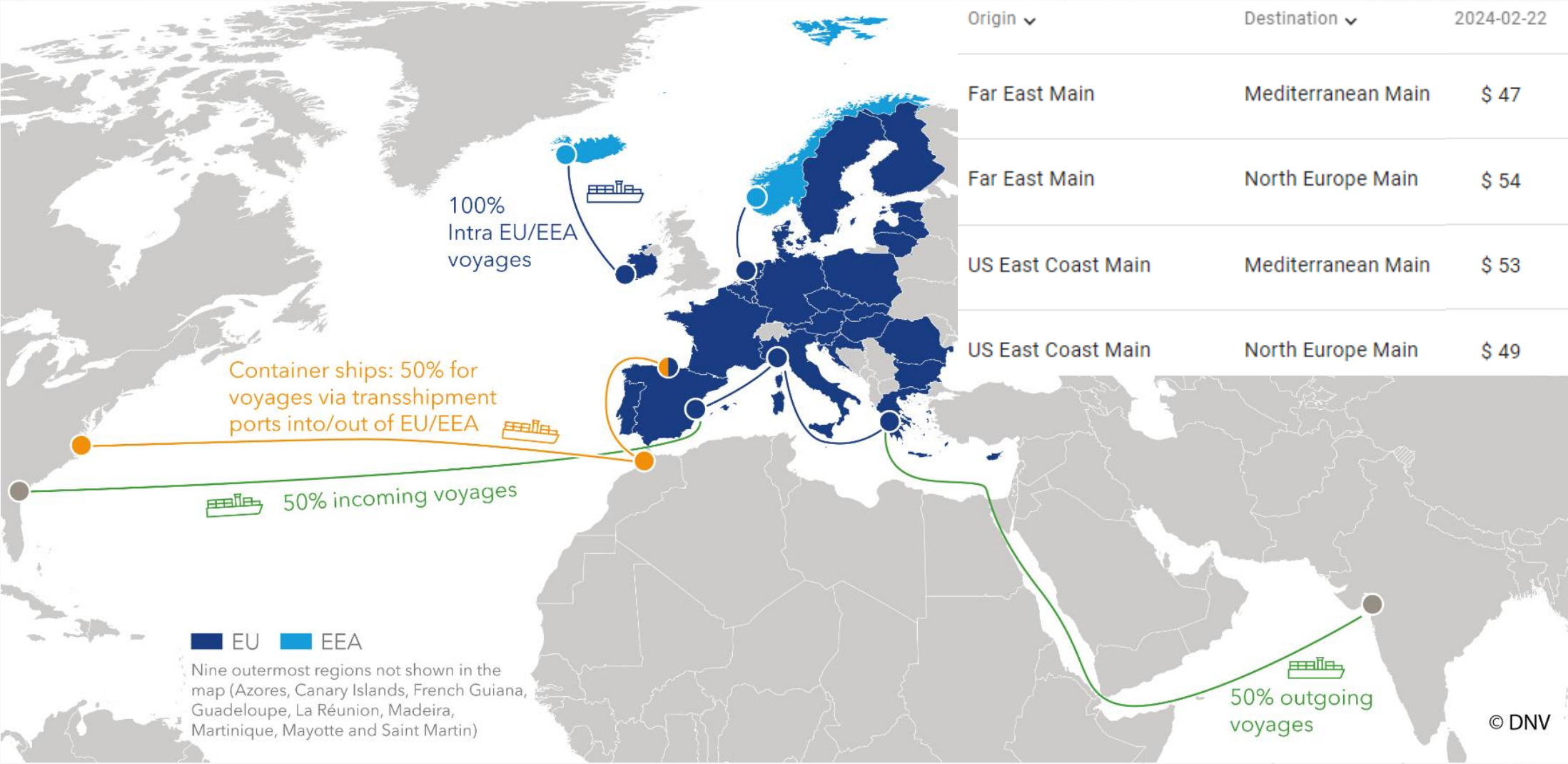
Mediterranean Main (mediterranean_main) - China Main (china_main)

XENETA



Surcharges – EU ETS

Coming in at expected levels



What's Next?

Thanks!

Meet us at the Lower Level, #B37



<https://hubs.ly/Q02hZSmx0>

XENETA

