

TPM²⁴

by S&P Global

Shipper Briefing

Framing the container shipping landscape

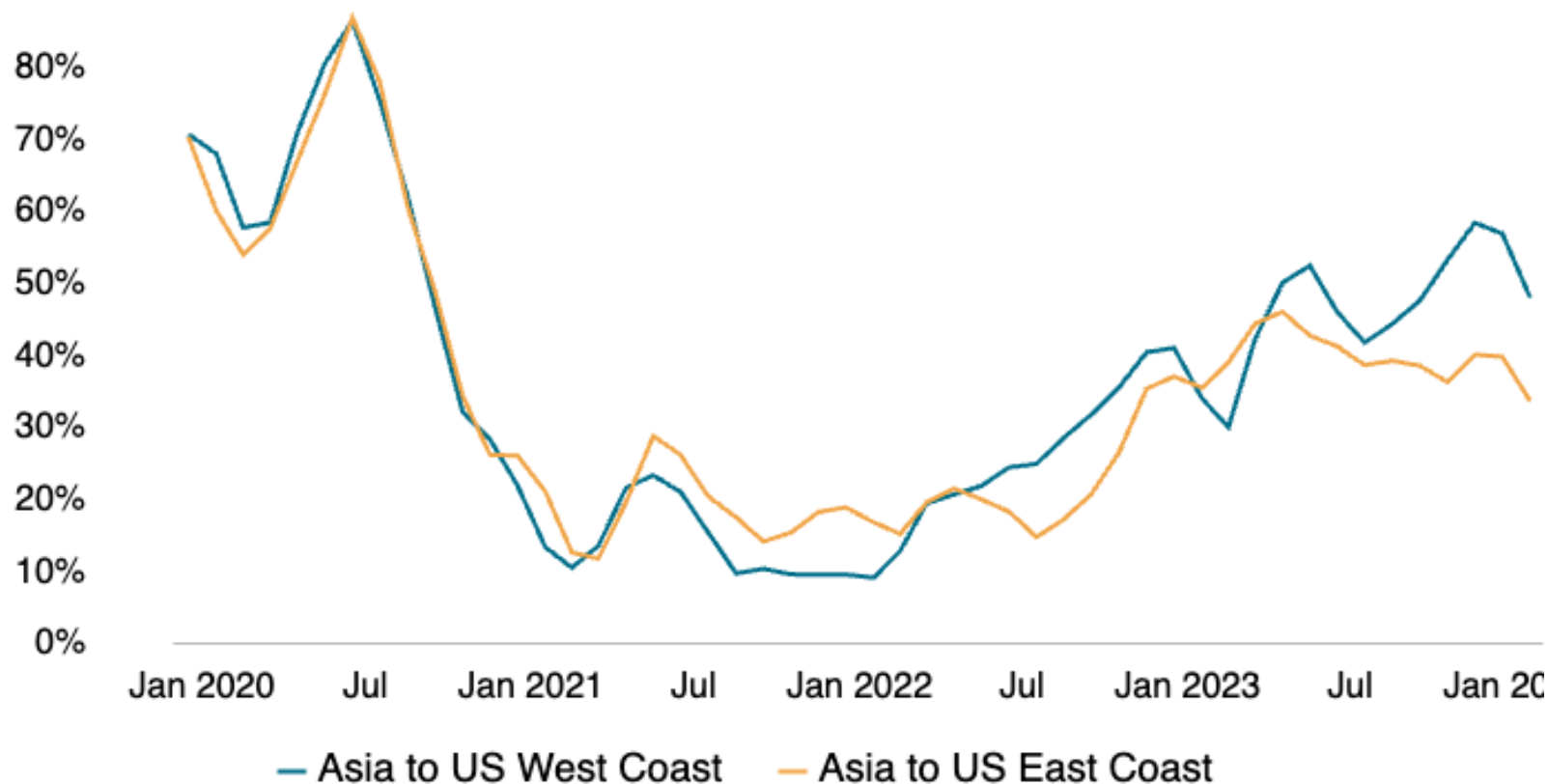
Mark Szakonyi

Executive Editor
Journal of Commerce

March 3, 2024

Trans-Pacific vessel reliability plunges in January

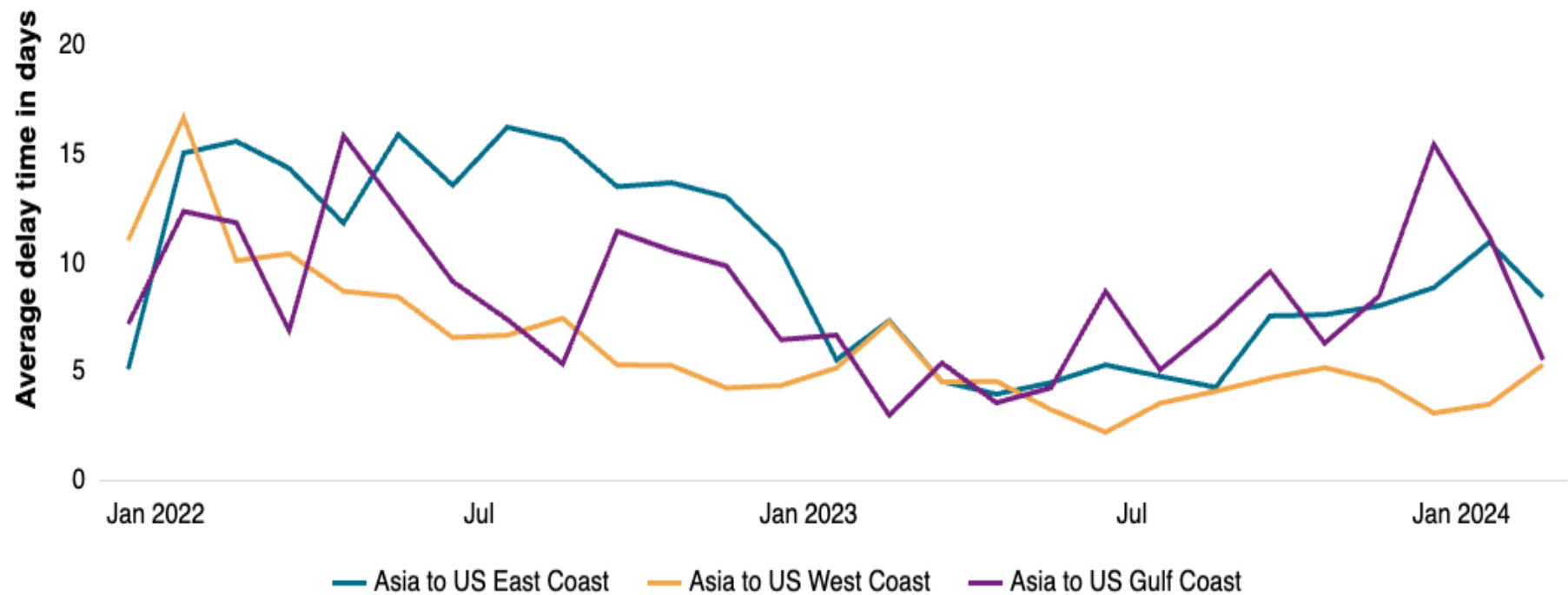
Percentage of on-time arrivals of container ships. Ships are considered late if they arrive one calendar day or more after schedule



Source: Sea-Intelligence Maritime Analysis

© 2024 S&P Global

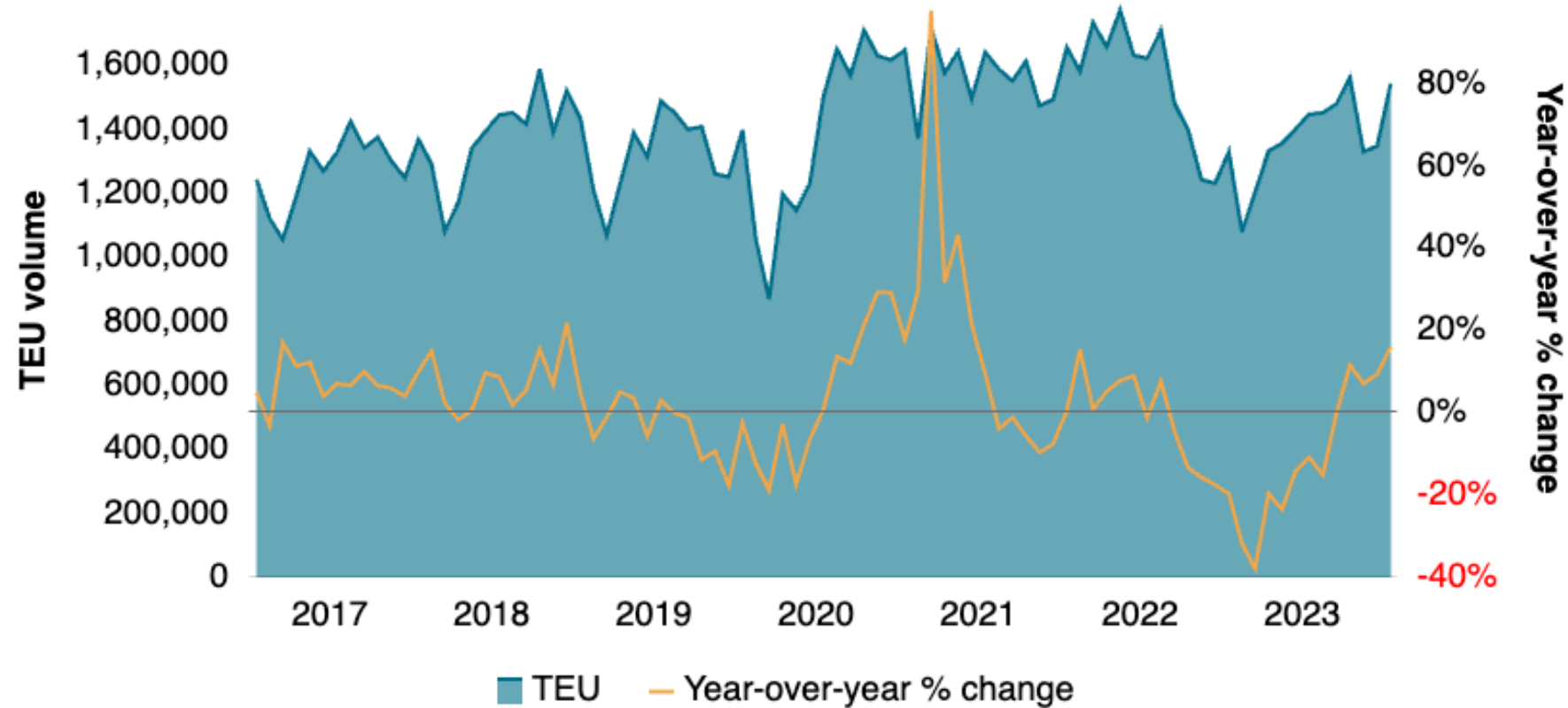
Delays on Asia-US East Coast routings easing
Average time difference between estimated and actual arrival from Asia to US.



Source: Gnosis Freight © 2024 S&P Global

US January imports from Asia jump 16% year-on-year

Total monthly TEU volume of US containerized imports from Asia, with year-over-year change

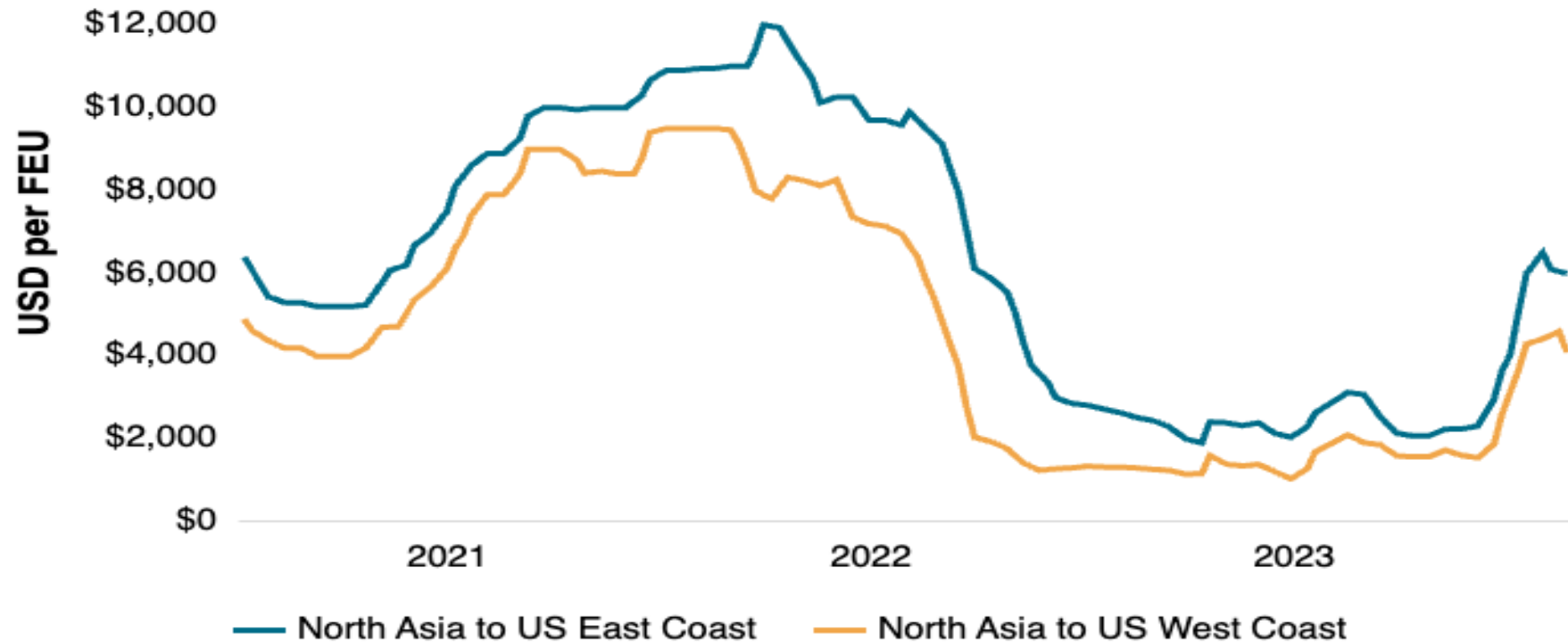


Source: S&P Global

© 2024 S&P Global

Seasonal Asia export slump ends Red Sea diversion rate rally

Container rate from North Asia to US East and West coasts in USD per FEU

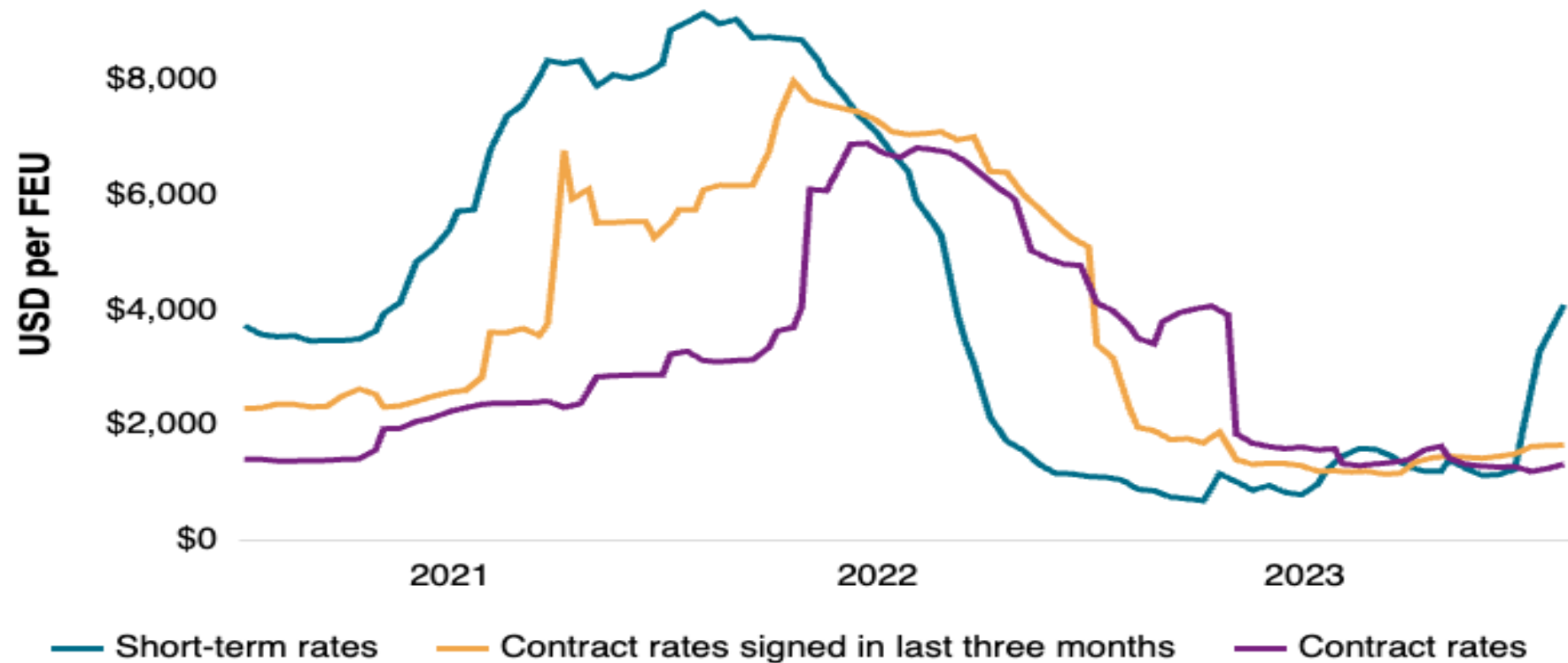


Source: Platts, S&P Global

© 2024 S&P Global

Asia-US contract barometer flatlining

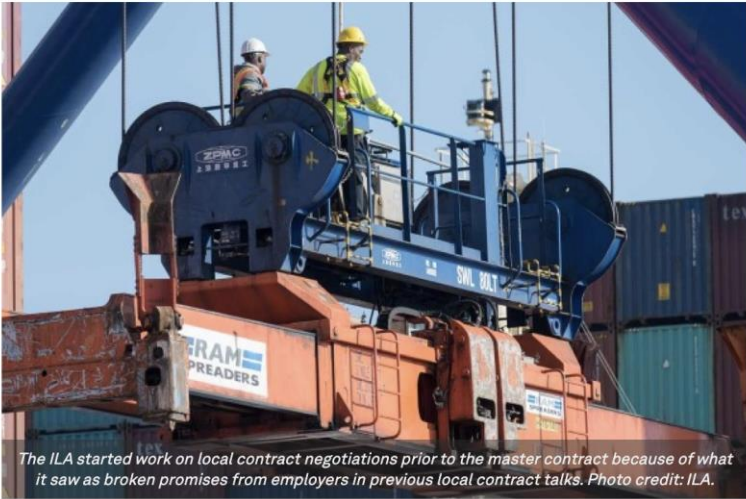
Asia to US West Coast short-term and contract rates



Source:
Vantage

© 2024 S&P Global

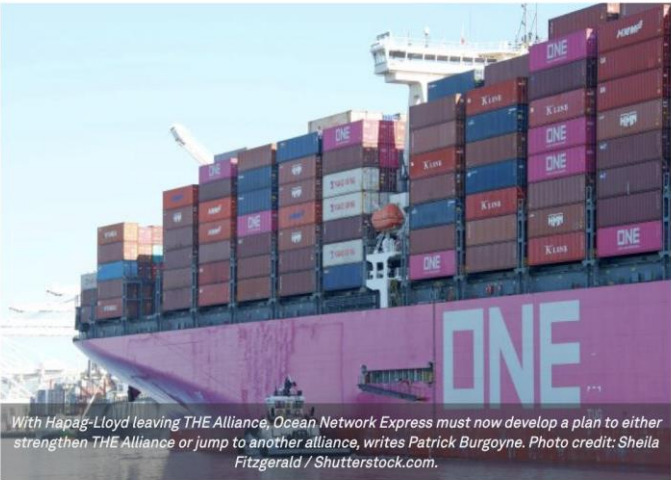
ILA gives chapters mid-May deadline to reach agreement on local issues



The ILA started work on local contract negotiations prior to the master contract because of what it saw as broken promises from employers in previous local contract talks. Photo credit: ILA.

Longshore labor | Container Shipping News | North American ports
Michael Angell, Associate Editor | Feb 8, 2024, 4:56 PM EST

As Gemini dawns, another change in shipping alliances is inevitable: expert



With Hapag-Lloyd leaving THE Alliance, Ocean Network Express must now develop a plan to either strengthen THE Alliance or jump to another alliance, writes Patrick Burgoyne. Photo credit: Sheila Fitzgerald / Shutterstock.com.

Maritime | Container lines | Marine terminals
Patrick Burgoyne | Feb 13, 2024, 11:14 AM EST

Journal of Commerce

March 11, 2024 • Vol. 25 • Issue 6 • \$25.00 • www.joc.com

Watershed rulings

Landmark FMC decisions reshape D&D billing, chassis practices



'COEXISTING' CHARGES
Global green fuel pricing must be compatible with EU ETS: WSC
P 16

UPSIDE POTENTIAL
US truckload carriers see growth in sharpened focus on dedicated
P 20

AN INDEFINITE PAUSE
Market headwinds, industry inertia put visibility cooperative on hold
P 24

EQUIPMENT RESHORING
White House counters risk of Chinese port cranes with \$20 billion for US sourcing
P 36